



HAZARDOUS ENCLOSURE LIGHTING

Paint and Powder Booths • Blast Booths • Wash Booths • Prep • Sanding

The AYLF-65W-1-CG-D-5K is a factory sealed light bar for use in paint spray areas. This sleek luminaire has a modern design and is constructed of aluminum extrusions for maximum heat dissipation. It is intended to be recessed mounted in the wall of a paint spray area and does not require an interlock switch or routine maintenance. It is only available in a four (4) foot length in a single row. Blast covers, both clear and diffused, are available upon request.



AYLF	65W	1	CG	D	5K
1	2	3	4	5	6

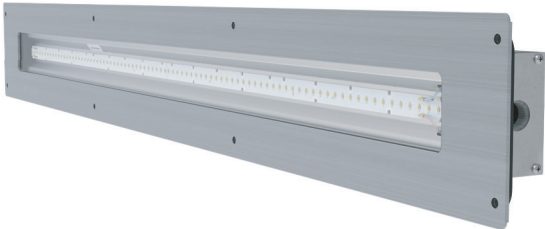
1 SERIES	2 SOURCE	3 VOLTAGE	4 LENS	5 DIMMING	6 CCT
AYLF	65W: 65 Watt	1: 120-277V	CG: Clear Glass	D: 0-10V Dimming	5K: 5000K

CERTIFICATIONS
UL844 / CSA-C22.2 NO.137 (HAZARDOUS)
CI D2, GRPS A,B,C,D
CII D2, GRPS F,G
PAINT SPRAY LISTED
T CODE: CI D2, CII D2= T4
UL1598 / CSA-C22.2 NO.250 (WET/DAMP)
CRI >80
-25°C TO 55°C AMBIENT
TYPE IC - AMBIENT 40C

Source	Voltage (VAC) 50/60Hz	Input Current (A)	CCT	Lumen Output (Lm)		
				Glass Lens	Blast Cover (Clear)	Blast Cover (Diffused)
65W	120-277	.53-.23	5,000K	8,620	7,820	6,200

CONSTRUCTION
Aluminum Extrusions
Clear tempered glass panel
No Access - No Servicable parts
Silicone free gaskets
4 Ft. length (nominal)
1/2" NPT Hub(s)
Weights: 17lbs
Equipped with through feed circuit
Wire whip - 5" out both ends

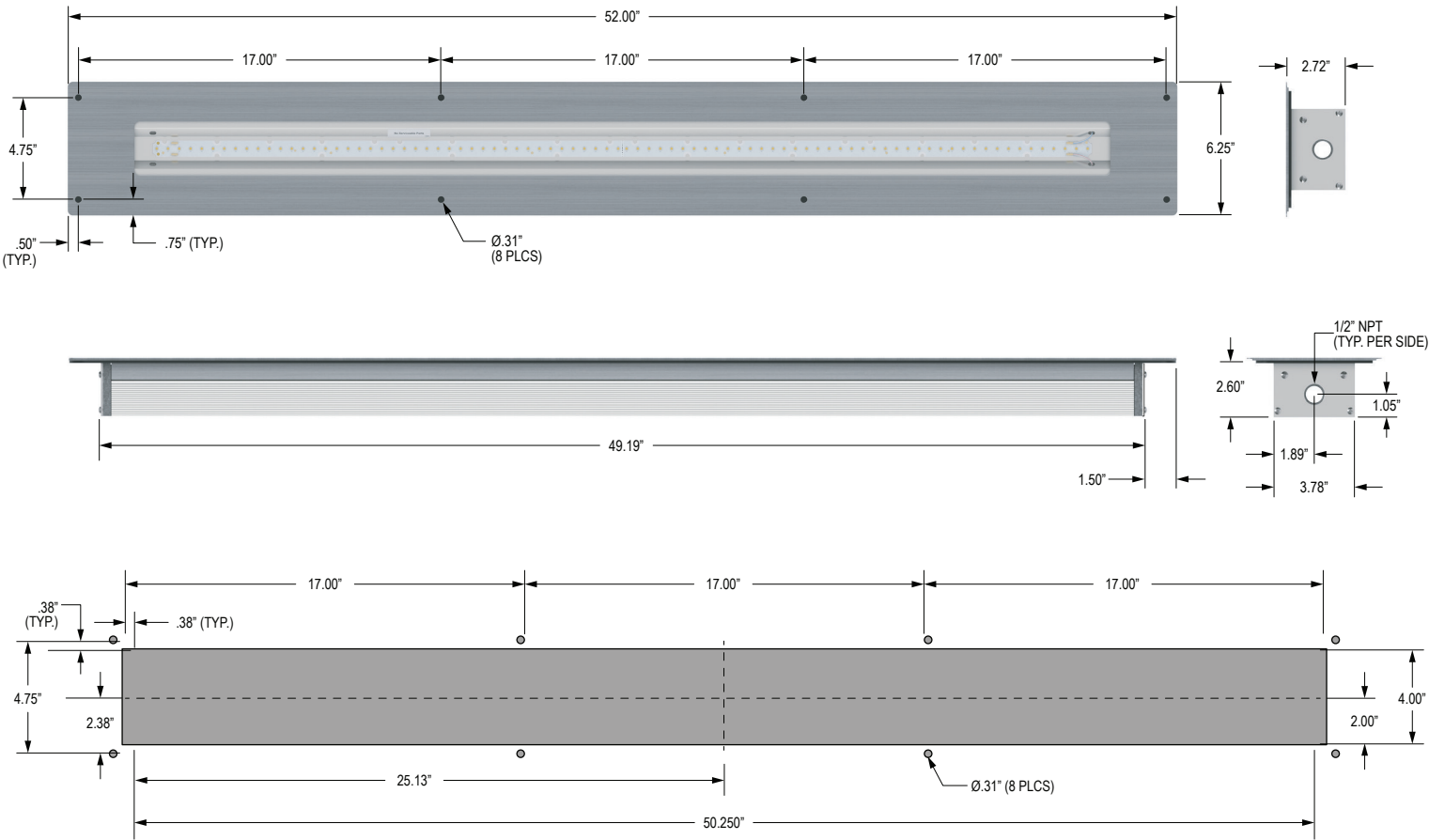
FEATURES
0-10V Dimming
Recess mount
5 year warranty
Withstands up to 71°C bake cycle for 90 minutes with fixture power off
Surge Protection 6kV
Daisy chainable
Blast covers (clear & diffused) are available upon request



HAZARDOUS ENCLOSURE LIGHTING

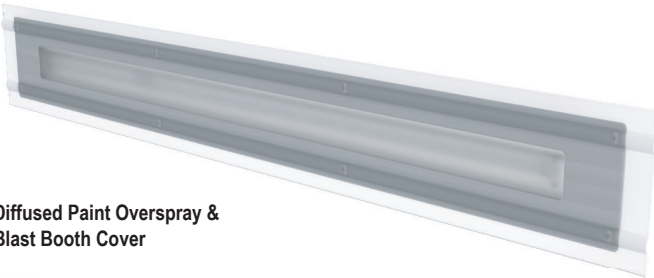
Paint and Powder Booths • Blast Booths • Wash Booths • Prep • Sanding

DIMENSIONS

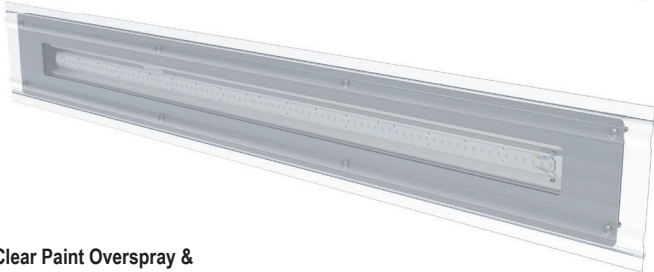


PAINT OVERSPRAY & BLAST BOOTH COVER - FIELD INSTALLED

Part Number	Description
100598	Polycarbonate Blast Cover (Diffused)
100599	Polycarbonate Blast Cover (Clear)



Diffused Paint Overspray & Blast Booth Cover



Clear Paint Overspray & Blast Booth Cover

